



*A low cost, manually  
set interval timer...  
just turn knob to set  
and start*



6

ELECTRIC  
TIMERS

The TF Series Timer is a low cost, manually set, synchronous motor driven timer, adjustable to a selected time interval by a pointer knob. The TF is available in 6 time ranges from 1 minute to 11 hours.

The TF panel mounts in a single 3/8" diameter hole with a 3/8 x 32 nut. The TF has a completely moulded housing containing the reduction gears, motor mounting clips, and contact members. Terminations of contact members are 1/4" quick connect. Motor leads are separate and are 6" long.

## OPERATION

To operate, turn knob counter clockwise to desired time interval. Internal contacts will transfer and remain transferred until pointer returns to zero and timer times out. At this point, contacts return to original position.

## SPECIFICATIONS

### Time Ranges

SYMBOL	TIME RANGE
1	1 Min
2	5 Min
3	11 Min
4	30 Min
5	60 Min
7	11 Hr

### Minimum Setting - 5% of Time Scale

### Voltage/Frequency

115V (+10%, -15%) 60 Hz  
230V (+10%, -15%) 60 Hz

### Burden

2.2 Watts

### Output Rating

10 Amp 1/6 HP, 250 VAC

### Contact Arrangement

SPDT — Form "C"

### Life — Mechanical and Electrical

10,000 Cycles

### Operating Temperature

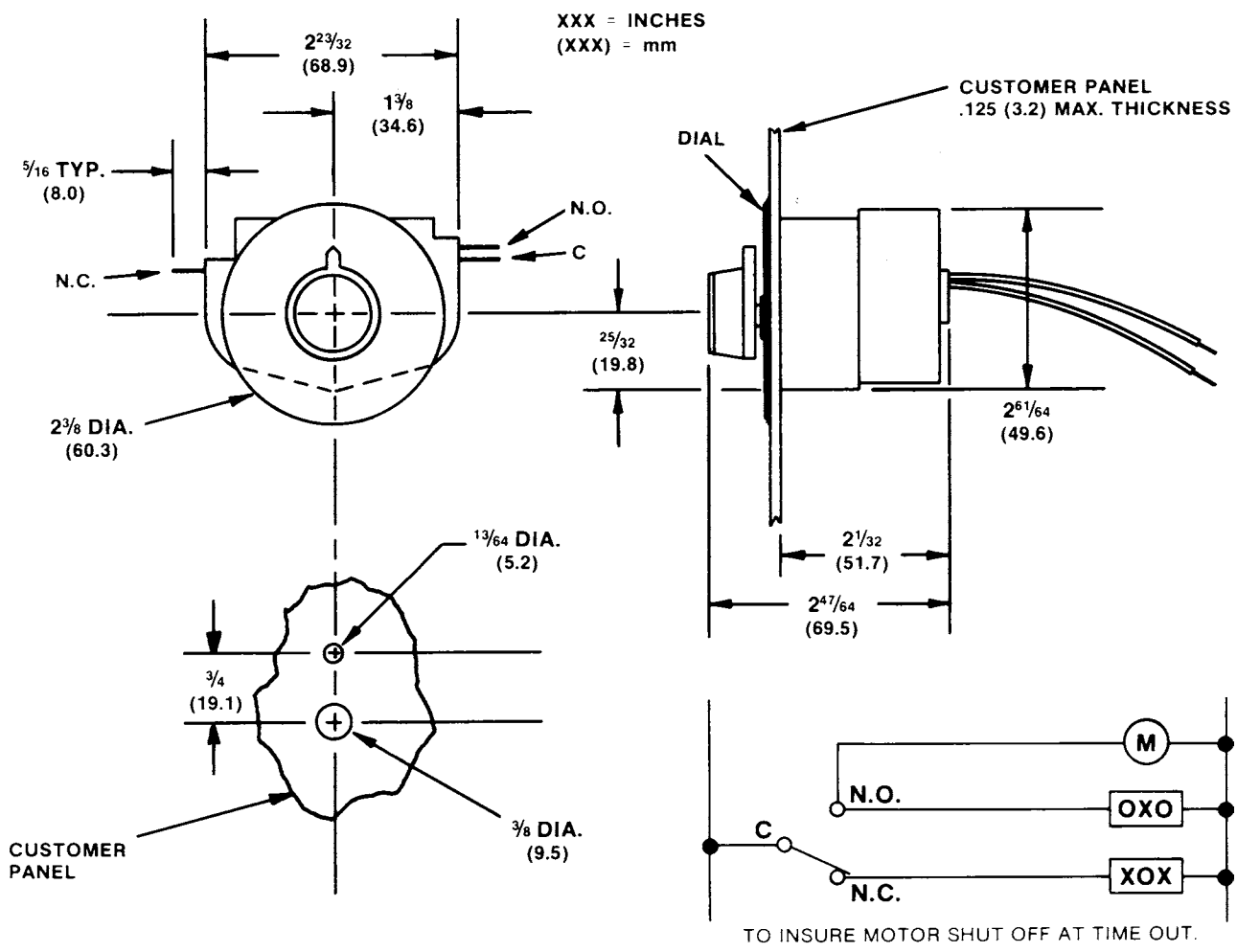
0°F to +140°F (-17°C to +60°C)

### Laboratory Testing

U.L. Recognition E61735



# MOUNTING DIMENSIONS



# ORDERING INFORMATION

**TIME RANGE**

SYMBOL	60 Hz	50 Hz
1	60 Sec	72 Sec
2	5 Min	6 Min
3	11 Min	13 Min
4	30 Min	30 Min
5	60 Min	70 Min
7	11 Hrs	13 Hrs

**SWITCH ARRANGEMENT**

SYMBOL	DESCRIPTION
3	Form "C" SPDT

**VOLTAGE & FREQUENCY**

SYMBOL	DESCRIPTION
A6	115V 50/60 Hz
B6	230V 50/60 Hz

TF 2 3 A6